

REGISTRAR'S REPORT - 2017/2018

| | 2016/2017 | 2017/2018 |
|---------------------------------|------------|------------|
| 2017 Co-ed Spring League | | |
| Parent-Tot | 25 | 21 |
| U5 | 67 | 81 |
| U6 | 96 | 82 |
| U7 | 104 | 88 |
| U8 | 139 | 97 |
| U9/10 | 151 | 132 |
| U11/12 | 104 | 100 |
| U13/14 | 53 | |
| Subtotal | 739 | 601 |

Change

Did not offer U13/U14 in Spring 2017.
 -18.6% Decrease expected as both Richmond FC and RGSA offer alternate non-spring league programming for selected teams (diminishing girl registrations).

| | | |
|--------------------------------------|--|------------|
| 2017 Spring Training Selected | | |
| U9 Development | | 22 |
| U10 Development | | 24 |
| U11 Development | | 28 |
| U12 Development | | 37 |
| U13 Selects | | 37 |
| U14 Selects | | 17 |
| U15 Selects | | 34 |
| U16/U17 Selects | | 27 |
| U9-U18 Goalkeeper | | 15 |
| Subtotal | | 241 |

As spring training for fall/winter teams has become more standardized will include these numbers.

| | | |
|---------------------|------------|------------|
| Total Spring | 739 | 842 |
|---------------------|------------|------------|

12%

| Boys Fall/Winter League | 2016/2017 | 2017/2018 |
|--------------------------------|-------------|-------------|
| U5 | 45 | 46 |
| U6 | 65 | 72 |
| U7 | 128 | 83 |
| U8 | 133 | 116 |
| U9 | 133 | 124 |
| U10 | 126 | 109 |
| U11 | 107 | 93 |
| U12 | 118 | 84 |
| U13 | 84 | 100 |
| U14 | 93 | 67 |
| U15 | 70 | 64 |
| U16 | 82 | 53 |
| U17 | 61 | 69 |
| U18 | 63 | 43 |
| Subtotal | 1308 | 1123 |
| GRAND TOTAL | 2047 | 1965 |

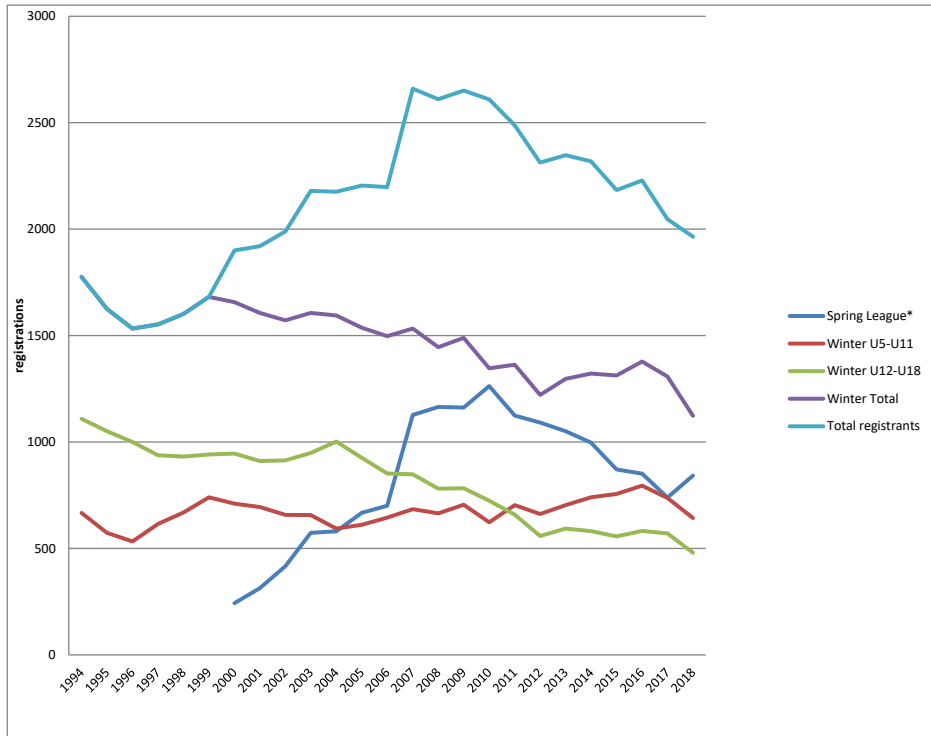
-14.00%

-4.00%

Richmond FC - Historical Registration Figures

May 2018

| Fiscal Year | 1994 | 1995 | 1996 | 1997 | 1998 | 1999 | 2000 | 2001 | 2002 | 2003 | 2004 | 2005 | 2006 | 2007 | 2008 | 2009 | 2010 | 2011 | 2012 | 2013 | 2014 | 2015 | 2016 | 2017 | 2018 |
|-------------------|------|------|------|------|------|------|------|------|------|------|------|------|------|------|------|------|------|------|------|------|------|------|------|------|------|
| ending March 31, | | | | | | | | | | | | | | | | | | | | | | | | | |
| Spring League* | | | | | | | 243 | 314 | 417 | 574 | 581 | 668 | 701 | 1127 | 1165 | 1162 | 1263 | 1124 | 1092 | 1051 | 997 | 871 | 851 | 739 | 842 |
| Winter US-U11 | 667 | 574 | 533 | 615 | 669 | 740 | 711 | 695 | 658 | 657 | 593 | 611 | 645 | 685 | 665 | 706 | 623 | 704 | 662 | 704 | 740 | 756 | 795 | 737 | 643 |
| Winter U12-U18 | 1109 | 1051 | 1000 | 938 | 932 | 942 | 946 | 911 | 914 | 949 | 1002 | 926 | 852 | 848 | 781 | 783 | 724 | 659 | 559 | 593 | 582 | 557 | 583 | 571 | 480 |
| Winter Total | 1776 | 1625 | 1533 | 1553 | 1601 | 1682 | 1657 | 1606 | 1572 | 1606 | 1595 | 1537 | 1497 | 1533 | 1446 | 1489 | 1347 | 1363 | 1221 | 1297 | 1322 | 1313 | 1378 | 1308 | 1123 |
| Total registrants | 1776 | 1625 | 1533 | 1553 | 1601 | 1682 | 1900 | 1920 | 1989 | 2180 | 2176 | 2205 | 2198 | 2660 | 2611 | 2651 | 2610 | 2487 | 2313 | 2348 | 2319 | 2184 | 2229 | 2047 | 1965 |



*effective 2017/2018 season Spring will now include spring training for selected teams